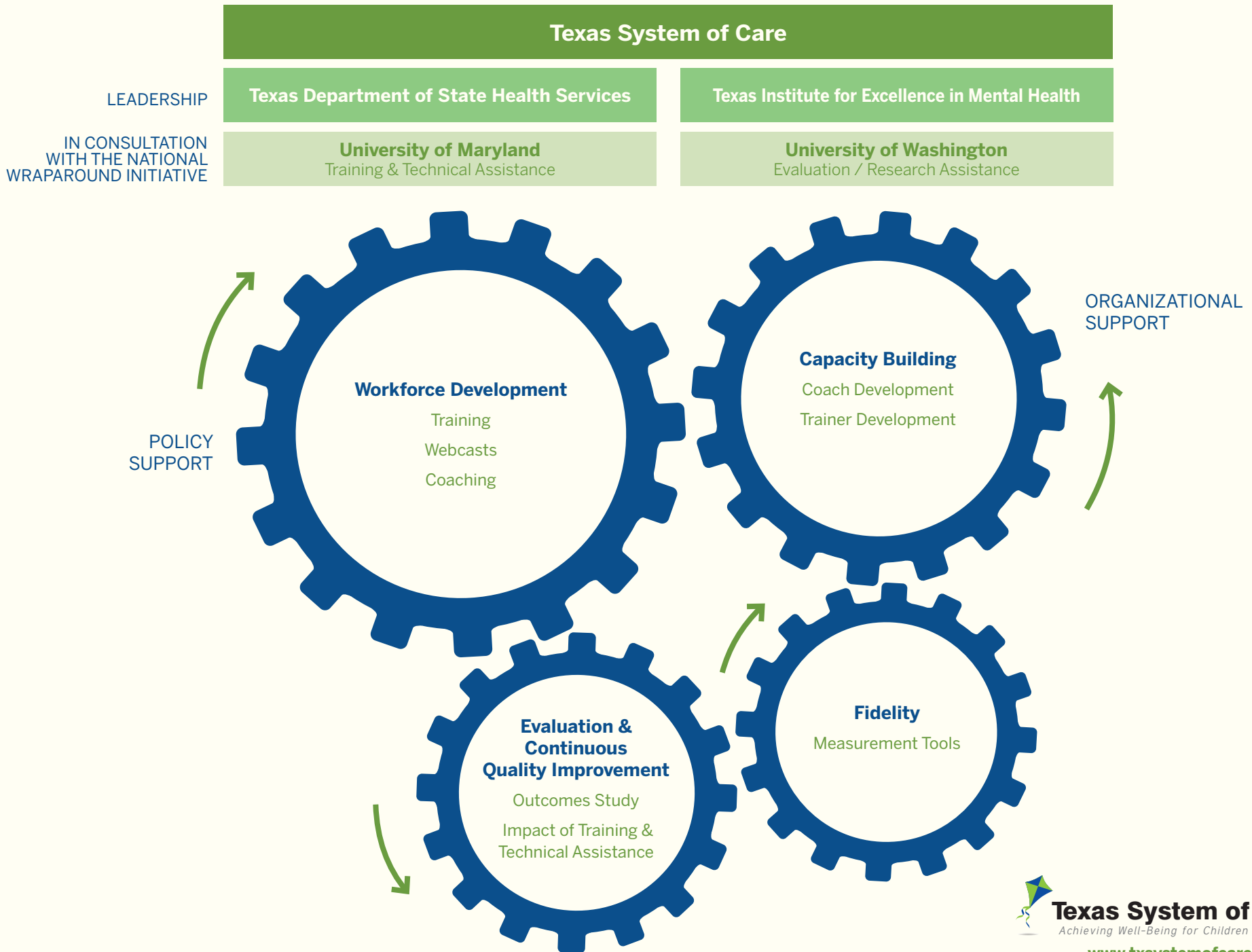


Wraparound in Texas: A Powerful Engine

Infrastructure for Statewide Implementation



Wraparound Defined: The wraparound practice model is a promising approach targeting children, youth, and families with severe emotional or behavioral needs. Based in an ecological model, wraparound draws upon the strengths and resources of a committed group of family, friends, professionals, and community members. Wraparound mobilizes resources and talents from a variety of sources resulting in the creation of a plan of care that is the best fit between the family vision and story, team mission, strengths, needs, and strategies. The team meets over time to implement this plan, monitor its effectiveness and work towards success.

Workforce Development

The goal of the workforce development effort is to help enhance the state's wraparound efforts through standardized training and targeted coaching. The workforce development initiative utilizes the curriculum developed by the Institute for Innovation and Implementation at the University of Maryland through the National Wraparound Initiative (NWI).

Training:

Introduction to Wraparound (3 days), Engagement in Wraparound (1 day) and Intermediate Wraparound (2 days) are all targeted to wraparound facilitators and their supervisors. Additional course: Advanced Training for Supervisors (2 days).

Coaching:

Onsite and virtual coaching on the wraparound process is provided using tools developed by NWI. Coaching is targeted to supervisors of wraparound facilitators and assists in ensuring skill attainment toward high fidelity wraparound.

Wraparound Learning Collaborative:

Monthly web-based meetings are held with wraparound facilitators and supervisors to share ideas, discuss barriers, and honor best practices.

Online Training:

Three web-based training modules are available that provide an overview of wraparound, discuss wraparound team member roles and provide an overview of the YES 1915(c) Medicaid waiver.

Capacity Building

In-state Coach and Trainer Development:

The goal of this effort is to develop a pool of local (in-state) coaches and/or trainers certified by NWI to provide ongoing training, coaching and technical assistance to facilitators and supervisors of wraparound throughout Texas. The development of certified coaches/trainers includes participation in didactic and experiential workshops, technical assistance and feedback on skills development and graduated responsibility for the coaching role. Currently, eight coaching/training candidates, with ethnic and geographic diversity, have been selected from across the state and have begun advanced training and coaching with NWI to become certified coaches.

Evaluation and Continuous Quality Improvement

The goal is to develop infrastructure to evaluate the outcomes of children, youth, and families who participate in wraparound planning and provide regular information for quality improvement and data-informed decision making.

Outcomes Study:

In collaboration with the University of Washington, a wraparound outcomes study is evaluating the initial implementation of wraparound training and coaching. Seven local mental health authorities (LMHAs) are participating, with three sites receiving coaching in addition to training in wraparound. The study will examine differences in outcomes of youth served prior to training and coaching and those served one year after implementation. Additionally, differences in outcomes between families served in LMHAs receiving training alone and those participating in both training and coaching will be compared.

Impact of Training & Technical Assistance:

Ongoing evaluation of the training and technical assistance provided in consultation with NWI is being conducted.

Fidelity

Texas aims to establish infrastructure for ongoing fidelity review of wraparound. Currently, measures are being considered and piloted in select locations. Instruments under consideration include the Team Observation Measure (TOM), Wraparound Fidelity Index (WFI) and a shortened version of the Wraparound Fidelity Index (WFI-EZ).

Learn More

To learn more about wraparound efforts in Texas, please visit the Texas System of Care website at www.txsystemofcare.org.