

System of Care Values in Action



LAURA PEVETO
TRAVIS COUNTY HEALTH AND HUMAN
SERVICES
AUSTIN, TEXAS

Evolution of Travis County SOC



- 1989 - Community Resource Coordination Group
- 1998 - SAMHSA Grant –The Children’s Partnership
- 2004 – Community Partners for Children (CRCG)
- 2005 – Sustained The Children’s Partnership
- 2005 – TRIAD integrated into SOC
- 2006 – Youth and Family Assessment Center integrated into SOC
- 2007 – CPS Reintegration Project
- 2010 – YES Waiver
- 2012 – ASSET Grant Collaboration



SOC Initiatives in Travis County



- SOC Initiatives
 - Community Partners for Children - CRCG
 - The Children's Partnership
 - ✦ CPS Reintegration Project
 - TRIAD
 - Youth and Family Assessment Center
- 28 Care Coordination Staff within 9 entities
- 3 Parent Liaison Staff



System of Care Value – Family Driven & Youth Guided



- Family Driven & Youth Guided
 - the strengths and needs of the child and **family determining** the types and mix of services and supports provided
 - families have a **primary** decision-making role
 - youth are engaged as **equal partners** in creating systems change

System of Care Value – Family Driven & Youth Guided



- **Fidelity to Wraparound Process**
 - Training Team
 - Quality Assurance Manager
 - SOC Supervisors
- **Care Coordinators**
 - Trained and Supported in SOC Values & Wraparound Process
- **Parent Liaisons**
 - Direct Support to Families
 - Community Advocacy & Education



System of Care Value – Family Driven & Youth Guided



- **501 3(c) Non-Profit Board (TCP Board)**
 - Family, Community and Agency Representation
 - Advocacy and Education
 - Unrestricted Funds
- **Community Collaborations**
 - Expansion of Family Voice
- **Family Support & Education**
 - Quarterly Celebrations



System of Care Value – Community Based



- **Community Based**
 - Locus of services as well as system management resting within a supportive, adaptive infrastructure of structures, processes, and relationships at the community level.



System of Care Value – Community Based



- **System Management & Infrastructure**
 - Training Team
 - SOC Manager & SOC Management Team
 - Quality Assurance Position
 - Community Partners for Children – CRCG
 - ✦ Single Point of Entry
 - ✦ Initial Individualized Plan
 - ✦ Strength-Based Approach
 - Shared Database
 - ✦ TCM (The Clinical Manager)



System of Care Value – Community Based



- **System Management & Infrastructure**
 - **Provider Network Management – MSO/ATCIC**
 - ✦ Recruit
 - ✦ Credential
 - ✦ Contract
 - ✦ Facilitate payment
 - ✦ Audit/Review service provision
 - **Network Providers**
 - ✦ Traditional
 - ✦ Non-Traditional
 - ✦ Basic Needs



System of Care Value – Community Based



- **Definitions of Funding Options**
 - **Blended Funding**: Pooling of funds to support delivery of services.
 - **Braided Funding**: Weaving together of more than one fund source to support services needs.
 - **Flexible Funding**: Flexible use of dollars to provide services that meet the need of the child and family.

System of Care Value – Community Based



- Systems Management & Infrastructure

- Braided Funding

- ✦ Contracts

- ✦ Line Item Designation

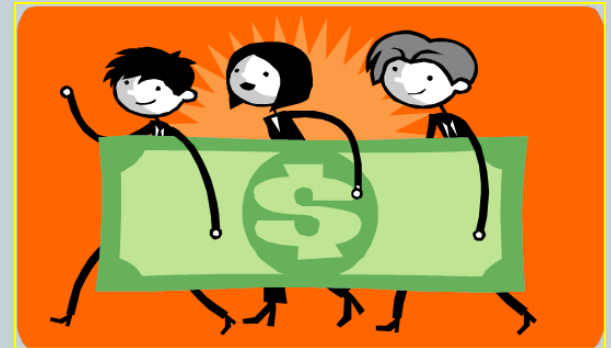
- ✦ Partners

- Travis County Health & Human Services

- Travis County Juvenile Probation Department

- Austin Travis County Integral Care (MHA)

- City of Austin (CDBG Youth Development Funds)



System of Care Value – Community Based



- System Management & Infrastructure
 - Flexible Funding
 - ✦ All Partners
 - TCJPD
 - TCHHS
 - School District request for ESC
Region 13 Non-Education
Funds



Travis County SOC Management Team



- Sonia Hartman – SOC Manager
sonia.hartman@co.travis.tx.us
- Christy Kuehn – Quality Assurance
christinia.kuehn@co.travis.tx.us
- Gloria Petersen – Family Voice
gloria.petersen@co.travis.tx.us
- John Reynolds – MHA
john.reynolds@atcic.org
- Gail Penney-Chapmond – Juvenile Probation Dept.
gail.penney-chapmond@co.travis.tx.us
- Laura Peveto – SOC Project Support
laura.peveto@co.travis.tx.us
- Vacant – CRCG (CPC) Coordinator

